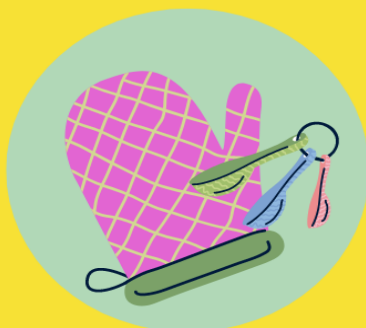


LARUE COUNTY 2023 4-H FAIR EXHIBIT



Catalog

Entries will be accepted on
7/27/23 from 10AM-1PM



2023 LaRue County Fair

LC Fairgrounds, 375 S. Greensburg St., Hodgenville
Sponsored by the LaRue County 4-H Council

270-358-3401



TABLE OF CONTENTS

HORTICULTURE & PLANT SCIENCE.....	3
VEGETABLES.....	4
CROPS.....	4-5
ELECTRIC.....	5
GREEN ENERGY.....	6
WOOD SCIENCE.....	6
ENTOMOLOGY.....	6-7
HONEY.....	7-8
FORESTRY.....	8
GEOLOGY.....	8-9
ARTS.....	9-11
PHOTOGRAPHY.....	11-13
SEWING.....	13-15
NEEDLEWORK.....	15-18
HAND EMBROIDERY.....	16
KNITTING.....	16-17
QUILTING.....	17-18
FOODS.....	18-19
FOOD PRESERVATION.....	19-20
HOME ENVIRONMENT.....	20-23
CONSUMER & FINANCIAL EDUCATION	23-24
LEADERSHIP.....	24-25
TRENDS & TRADITIONS	25-26



4-H EXHIBITS

Thursday, July 27, 2023

Superintendent: Misty Wilmoth, Extension Agent for 4-H Youth Development

Total Premiums Available -- \$300.00

Rules

Exhibitors must be between the ages of 9 and 18 as of January 1, 2023 and a member of LaRue County 4-H. Cloverbud 4-H members (ages 5 to 8) may enter classes for exhibit only. Cloverbud exhibits will not be judged, however participation ribbons will be awarded. Exhibitors may only make one entry per class. All exhibits must have been completed after the 2022 County Fair. There is no limit to the number of classes that a 4-Her may enter. Entries must be made between 10:00 a.m. and 1:00 p.m. on Thursday, July 27 at the LaRue County Fairgrounds. Judging will immediately follow. The Extension Office staff and volunteers are not responsible for lost, damaged or stolen items. Contact the LaRue County Extension Office at 270-358-3401 if you have questions about entry requirements.

Ribbons and premiums will be awarded to all entries. Blue Ribbon class champions in eligible classes will advance to the State Fair. 4-H Premiums will be determined by the total number of exhibits. The Danish System will be used for judging. All exhibits will receive a blue, red, or white ribbon, unless disqualified.

No article may be entered in two classes. State Fair 4-H guidelines determine which exhibits are eligible to advance. Some divisions limit the number of entries per individual at the state level.

All exhibits must be properly labeled and entered in the correct class. Identification labels can be obtained at check-in. **Please carefully read the class description and requirements.** Contact the Extension Office at 270-358-3401 if you need additional information.

Food exhibits must use the exact recipe provided in the 4-H Project Book. To obtain project books, contact the LaRue County Extension Office at 270-358-3401.

4-H CLASSES:

4-H HORTICULTURE AND PLANT SCIENCE – DIVISION 6015

- 561 Environmental Awareness (Such as but not limited to:) A one page description of project must accompany entry item (type or printed neatly) to be eligible for entry.
- A. Tree planting on city property, roadways, parks, etc.
 - B. Home landscaping
 - C. Composting
- 562 Production and Marketing (such as but not limited to:)
- A. Vegetable garden planted for home and/or market use.
 - B. The planting, production, or management of fruit plantings.
 - C. The planting, production, or management of trees, shrubs, greenhouse crops or garden perennials.
- 563 Experimental Horticulture (such as, but not limited to:) A one page description of project must accompany entry item (type or printed neatly) to be eligible for entry.
- A. "Science Fair" type of exhibit involving experimental work with plants
 - B. Comparison of different varieties of vegetables or annual flowers
 - C. Comparison of mulching or other cultural practices
- 564 Horticultural Project Exhibits (such as, but not limited to:) A one page description of project must accompany entry item (type or printed neatly) to be eligible for entry.
- A. How to propagate plants
 - B. How to force spring bulbs
 - C. How to start seeds
 - D. How to graft cacti
 - E. How to dry herbs

RULES: Do not use garden soil in containers. Use well-drained, disease-free potting soil for all containers.

- 565 Terrariums
566 Dish gardens (desert or tropical)

- 567 Vegetable container garden (grown in container, not dug from garden)
- 568 Annual container garden (non-vegetable)
- 569 Houseplants
- 570 Hanging basket
- 571 Herb Container Garden
- 572 Window Box Display
- 573 Upcycle Container Garden (example, wood pallet garden)

4-H VEGETABLES - DIVISION 6015

- 574 Best exhibit of five or more fruits and/or vegetables. Must be in a container no larger than 2'x3' and each item must be labeled
- 575 Tomato (5 per plate) Must be ripe (red or yellow color only) cherry type
- 576 Tomato (5 per plate) beef steak
- 577 Tomato (5 per plate) heirloom
- 578 Peppers, hot (5 per plate)
- 579 Peppers – bell (5 per plate)
- 580 Peppers – sweet (5 per plate)
- 581 Cucumbers, slicing (5 per plate)
- 582 Cucumbers, pickling (5 per plate)
- 583 Beans, snap or lima (12 per plate)
- 584 Corn, sweet (in the husk with silks) (5 ears per plate)*
- 585 Cantaloupe (1 whole), **halved**
- 586 Squash, summer (3 per plate)
- 587 Eggplant (3 per plate)
- 588 Potato (5 per plate)

***Place ears of corn in a tote or plastic bag (such as a grocery bag). Sealed plastic bags (such as Ziplock bags) are not recommended because the sealed bags can cause the corn to mold and have a bad odor,**

- 589 Largest Tomato (by weight) Must be ripe (red or yellow color only)
- 590 Largest Pumpkin (by weight)
- 591 Largest Watermelon (by weight)

4-H CROPS - DIVISION 6018

Rules:

1. Grains must be entered in one gallon zip lock bags. Yield/variety information must be included.
2. Hay entries should only be 2 bale and should be tied securely and placed in a large double strength garbage bag. Tags must be attached to the bale and not the bags.

LEGUME HAY:

- 600 Alfalfa hay, 1/2 bale (no full bales accepted) from the current year's project crop, neatly tied and labeled.
- 601 Red clover hay, 1/2 bale (no full bales accepted) from the current year's project crop, neatly tied and labeled.

GRASS HAY:

- 602 Timothy Hay, 1/2 bale (no full bales accepted) from this current year's project crop, neatly tied and labeled. Place hay in a double strength plastic bag.
- 603 Other Grass Hay, 1/2 (no full bales accepted) bale from the current year's project crop, neatly tied and labeled. Place hay in a double strength plastic bag.

MIXED HAY:

- 604 Mixed Hay, 1/2 bale (no full bales accepted) from the current year's project crop, neatly tied and labeled.

YELLOW CORN:

- 605 Yellow-ear, from the previous year's crop, 8 ears shucked, and labeled with variety and yield.
- 606 Yellow-ear, from the current year's crop, 8 ears shucked, and labeled with variety and yield.
- 607 Yellow-shelled, from the previous year's crop, 0.5 gallon in a container, and labeled to show variety and yield.

WHITE CORN:

- 608 White-ear, from the previous year's crop, 8 ears shucked, and labeled with variety and yield.
- 609 White-ear, from the current year's crop, 8 ears shucked, and labeled with variety and yield.
- 610 White-shelled, from the previous year's crop, 0.5 gallon in a container, and labeled to show variety and yield.

POPCORN:

- 611 White Popcorn-ear, from the previous year's crop, 8 ears shucked, and labeled with variety and yield.
- 612 Red Popcorn-ear, from the previous year's crop, 8 ears shucked, and labeled with variety and yield.
- 613 Yellow Popcorn-ear, from the previous year's crop, 8 ears shucked, and labeled with variety and yield.

FIELD SOYBEANS (Oil):

- 614 Soybeans from the current year's crop, three stalks tied together below leaves, with roots intact, but free of soil, and labeled to show variety.
- 615 Soybeans from the previous year's crop. 1 gallon zip lock bag, and labeled to show variety and yield.

GRAIN SORGHUM (Milo):

- 617 Grain Sorghum from the current year's crop, three stalks tied together below leaves, with roots in tact, but free of soil, and labeled to show variety.
- 618 Grain Sorghum from the previous year's crop, 1 gallon zip lock bag, and labeled to show variety and yield.

SWEET SORGHUM

- 619 Sweet sorghum from the current year's crop, three stalks tied together below leaves, with roots intact, but free of soil, and labeled to show variety.

WHEAT (Soft, Red, Winter)

- 620 Wheat from the current year's crop, 0.5 gallon in a container, and labeled to show variety and yield.
- 621 Barley from the current year's crop, 0.5 gallon in a container, and labeled to show variety and yield.

4-H ELECTRIC - DIVISION 6021**MAGIC OF ELECTRICITY** (4HCCS BU-06848) (All exhibits must be DC powered).

- 645 Battery powered series and parallel circuits (Circuits must include both series and parallel, a simple switch and can be no more than 9 volts).
- 646 Homemade Galvanometer (Must be able to detect the presence of an electrical current)
- 647 Electromagnetic Circuits (Must be a working electromagnet with a simple switch and can be no more than 9 volts).
- 648 Simple homemade DC motor (Rotor must turn under its own power).

INVESTIGATING ELECTRICITY (4HCCS BU-06849) (all exhibits must be DC powered)

- 649 Battery powered series or parallel circuit (Circuit may be either series or parallel, must contain either a momentary and/or three way switch, a circuit diagram with explanation and can be no more than 9 volts).
- 650 Original design soldered circuit project (Circuit must contain an on/off switch, a motion or tilt activated switch, a light and sound producing device and must be powered by 9 volts. All connections in the circuit must soldered and a circuit diagram with explanation must be included).

WIRED FOR POWER (4HCCS BU-06850) (all exhibits must be AC powered and be able to be safely connected and disconnected from a standard 120 volt duplex outlet).

- 651 Display of wire sizes and types with description and example of usage (display must contain at least 12 different examples)
- 652 Simple household or farm use circuit (Circuit must contain one single pole switch controlling one electrical load device. Circuit should be mounted on a sturdy mounting surface and free standing. Wiring should be done with Romex NM-B 12 gauge wire and clamped or stapled appropriately. A circuit diagram with explanation must be included)
- 653 Complex household or farm use circuit (Circuit must contain at least two three-way switches, and may also contain a four-way switch, controlling one electrical load device. The circuit must also contain a working duplex electrical outlet. Circuit should be mounted on a sturdy mounting surface and free standing. Wiring should be done with Romex NM-B 12 gauge wire and clamped or stapled appropriately. A circuit diagram with explanation must be included)
- 654 Table, desk, vanity or floor lamp (any purpose – original design only)

ENTERING ELECTRONICS (4HCCS BU-06851) (exhibits may be either DC or AC powered. AC powered exhibits must be able to be safely connected and disconnected from a standard 120-volt duplex outlet).

- 655 Basic electronic circuits without solid-state components (from project book).
- 656 Basic electronic circuits with solid-state components (from kit).
- 657 Basic electronic circuits with solid-state components (original circuit design, must include circuit diagram and explanation).

GREEN ENERGY

- 658A Wind powered energy project (original design).
- 658B Solar powered energy project (original design).
- 658C Water powered energy project (original design).

4-H WOOD SCIENCE - DIVISION 6025

- 674 Level 1, **made from a kit**. Simple items which have pre-cut and pre-drilled parts and youth demonstrate knowledge of assembly, selection and use of fasteners (nails, screws and/or glue), sanding techniques, and appropriate finishes. (Examples could include but not limited to: small bird house, non-hopper bird feeder, etc.) Item must demonstrate skill with fasteners, sanding and appropriate finish (no puzzles).
- 675 Level 1, **NOT from a kit**. Simple constructed wood item showing knowledge of hand tools, wood selection, cutting, drilling, usage of fasteners (nails, screws and/or glue), sanding techniques, and appropriate finishes. (Examples could include but not limited to: napkin holder, letter holder, simple picture frame, wire wiggly, towel holder, serving tray, jewelry box, small flag holder, 4-H book ends, airplane, hurricane lamp, trivet (pot holder), etc.)
- 676 Level 2, **made from a kit**. More elaborate items which require proper cutting, drilling and youth demonstrate knowledge of selection and skill in use of fasteners (nails, screws and/or glue), sanding techniques, and appropriate finishes. (Examples could include but not limited to: jewelry box, tool tray, large bird house, pine wood cars, etc.) Item must demonstrate skill with fasteners, sanding and appropriate finish (no puzzles).
- 677 Level 2, **NOT from a kit**. More elaborate items that demonstrate mastered skills with hand tools, basic knowledge of power hand tools, fastening options, appropriate surface preparations, and finish applications. (Examples could include but not limited to: puzzle, foot stool, revolving tie rack, 4-H key holder, cutting board, book rack, serving dish shelf, sawhorse, hopper type bird feeder, etc.)
- 678 Level 3, **NOT from a kit**. Items showing a more advanced knowledge of power tools, expertise in cutting, fitting, surface preparation, attention to fastening details, and finish application, (Examples could include but not limited to: a multi-purpose box, corner shelf, book shelf or laminated wood projects, garden bench, planting box, nail and tool box, shop tool rack & shelf, etc.) Original designs are welcomed. This exhibit is to be made up of two parts: 1) the **item** and 2) a **folder containing photographic documentation** of the steps taken in order to complete this exhibit.
- 679 Level 4, **NO kits**. Exhibits with a "furniture" quality finish, showing an understanding of all woodworking techniques learned in previous levels. Items must show a mastery of joint construction and use of special woods, and finishes. (Examples could include but not limited to: checker boardroom divider, coffee table, end table, chest of drawers, gun rack or cabinet, etc.) Original designs are welcomed. This exhibit is to be made up of two parts: 1) the **item** and 2) a **folder containing photographic documentation** of the steps taken in order to complete this exhibit.
- 680 Level 4, **NO kits**. Exhibits do not require a fine finish (painted finish allowable) because of practical use. Items demonstrate knowledge of all woodworking techniques learned in previous levels. Items must show a mastery of cutting, drilling, joint construction, use of special woods, and appropriate finishes. (Examples could include but not limited to: porch swing, chaise lounge, picnic table, lawn chair, large planters, etc.) This exhibit is to be made up of two parts: 1) the **item** and 2) a **folder containing photographic documentation** of the steps taken in order to complete this exhibit.

4-H ENTOMOLOGY - DIVISION 6026

- 687A First year project (Up to three 9" x 13" official cardboard boxes, or up to two 18" x 24" wooden boxes, with minimum of 25 insects, maximum 50 insects, from at least four orders. Identification beyond order not necessary. All specimens must have date and locality label.)
- 687B First year project (minimum of 25 insect photographs, maximum of 50, from at least four orders). All photographs must have notation field. Submitted on USB in jpg format. See Extension Office for specific requirements.
- 688A Second year project (Up to three 9" x 13" official cardboard boxes, or up to two 18" x 24" wooden boxes, with minimum of eight orders and not less than 50 insects, nor more than 100 insects.) Half of the insects should be identified with a common name.
- 688B Second year project (50-100 photographs total, minimum of 8 orders, at least one-half identified with a common name). Specifications for exhibits are the same as for 687B except that no images from the first-year photography project may be reused for this project.
- 689A Third year project (Three 9" x 13" official cardboard boxes, or two 18" x 24" wooden boxes, with a minimum of 10 orders and 100 insects, a maximum of 150 insects.)
- 689B Third year project (100-150 photographs total, minimum of 10 orders, all identified with common names except immature stages. Photos of at least one arthropod egg, nymph, larva, and pupa – identified to order, no common name needed – should be included as a part of the 100-150 photos). See the Extension Office for Specifications for exhibits.
- 690A Fourth year project (Three 9" x 13" official cardboard boxes, or two 18" x 24" wooden boxes, with minimum of 12 orders and 150 insects, no maximum) An addition cardboard or wooden box with an example of insect damage,

the stage of the insect causing the damage and any other stage of the insect that helps identify the problem. Include information in the display that tells how the insect is controlled. Life cycle of two insects may be displayed if desired.

- 690B Fourth year project (150 photographs minimum, no maximum, 12 orders minimum, all identified with common names except immature stages. Photos of at least one arthropod egg, nymph, larva, and pupa – identified to order, no common name needed – should be included as a part of 150+ photos). Specifications for exhibits are otherwise the same as for 689B. No images from previous insect photography projects may be reused for this project.
- 690C Junior Level Entomology Video Project. 1-3 minute entomology video submitted to social media platform (YouTube or TikTok), focusing on one insect or insect relative (including arachnids, centipedes, millipedes, and crustaceans) that lives in Kentucky. Specifications:
- Video may be created on any video-editing platform and may include editing, cuts, text, special effects, filters, still images, music, and narration.
 - The final video will be uploaded by the 4-Her onto YouTube or TikTok, either to an account managed by local County Extension staff or to an account managed by the 4-Her. If the County Office is managing the account, they will provide a link to the video to blaken@uky.edu. If the 4-Her chooses to upload the video with privacy settings, the final video may be shared as a link to blaken@uky.edu (for YouTube videos) or direct messaged to [@kentucky_bugs](https://www.instagram.com/kentucky_bugs) (for TikTok videos) prior to St. Fair project submission deadlines.
 - The video should begin with an introduction from the 4-Her which includes the following information: First Name, County Name, Name of Project ("Junior Level Kentucky 4-H Entomology Video Project"), Common Name of Insect (or insect relative), Scientific Order Name of Insect (or insect relative).
 - The 4-Her may appear in the video if they elect to do so and if they have a H-328 photo consent form on file (<https://entomology.ca.uky.edu/file/photo-imageconsentformh328pdf>). The inclusion of 4-H logos (such as on a T-shirt, or on a County Extension sign) in the video is encouraged. Videos may be used by the University of Kentucky on websites or social media for education or entertainment purposes.
 - The video should focus on a single kind of native or non-native insect or insect relative that lives wild in Kentucky. The video does not have to focus on a single species, but needs to be more specific than the Order level. For instance, a video on "wolf spiders" would be acceptable, but "spiders" would be too general for this project. Similarly, "lady beetles" would be an appropriate topic, but "beetles" is too general.
 - The video may cover any factual information about the creature including: habitat, feeding strategies, defense, range, life cycle, impacts to humans, conservation status. Additional content, (such as folklore, humor, or personal experiences with the creatures) may be included, but should account for less than 50% of the content. Information may be delivered via narration (live or overdubbed), text/subtitles, or a combination.
 - Any media used in the video must be generated by the 4-Her. Images, video clips, music or sound clips from other creators should not be used, with the exception of background music licensed for use by individual social-media platforms.
- 691 Fifth year project (may be repeated for successive years of eligibility but must be a different exhibit. No exhibit that has been judged in any previous State Fair may be entered.) Any type of display that pertains to experiences beyond those of previous projects. Special collections of native and/or exotic butterflies, beetles to some other insect order; a study in depth of one insect or small group of insects: a display of insect camouflage; a display of plastic embedded insects; a collection of insect larvae and nymphs are examples. Charts, photographs, models or any other visual aids may be used. 4-H'ers are encouraged to write a short (1 or 2 paragraphs) statement developing the theme of their fifth year display.
- 691B 4-Her may repeat the fourth year project with all new photographs, or submit a creative digital project that is different from the previous projects. Examples may include: a documentary on a beneficial or pest insect based on video footage and photos curated by the 4-Her; a webpage covering an aspect of entomology, featuring the 4-Hers digital photographs; a short online social media course that teaches viewers about some aspect of entomology. This project may be repeated for successive years of eligibility but must be a different exhibit each year (or a repeat of the 4th year project with new photos).
- 691C Senior Level Entomology Video Project. 1-3 minute entomology video submitted to social media platform (YouTube or TikTok), focusing on one insect or insect relative (including arachnids, centipedes, millipedes, and crustaceans) that lives in Kentucky. Specifications: same as 690C except for Senior level.

Honey

Honey will show better in oval, flat sided to square clear glass containers. 4-Her's must use standard honey jars. The jars and lids must be clean. Fill jars to the fill line. Note: Two identical jars must be submitted for the following classes.

- 692 Two one pound containers of white extracted honey
693 Two one pound containers of light amber extracted honey

- 694 Two one pound containers of amber extracted honey
- 695 Two one pound containers of dark amber extracted honey
- 696 Two wide mouth pints or classic jars of chunk honey - any color
- 697 Any frame of capped honey suitable for comb honey (Light)
- 698 Any frame of capped honey suitable for comb honey (Amber)
- 699 Any frame of capped honey suitable for extraction (Light)
- 700 Any frame of capped honey suitable for extraction (Amber)
- 701 Best display of one-frame observation hive of honey bees consisting of worker bees, a properly marked queen and brood.

4-H FORESTRY - DIVISION 6027

FIRST YEAR

- 703 Leaf Collections
Collection of 10 leaves representing 10 forest trees found in Kentucky. Mounting instructions in the forestry book, "Welcome to 4-H Forestry" (4DF-01PA or most recent version) Activity #1 are to be followed.
- 704 Leaf Print Collection
Collect and print 10 leaves representing 10 forest trees found in Kentucky. Instructions in the forestry book, "Welcome to 4-H Forestry" (4DF-01PA or most recent version) Activity #3 are to be followed.

SECOND YEAR

- 705 Leaf Collection
Collection of 20 leaves representing 20 forest trees found in Kentucky. Mounting instructions in the forestry book, "4-H Forestry Project Unit 1-Introducing Yourself to Trees". (4DF-01PA or most recent version) Activity #1 are to be followed.
- 706 Educational Exhibit
Develop a creative educational exhibit on some phase of forestry. The exhibit may utilize any visual technique. The total exhibit is not to exceed dimensions of 2' x 2'.

THIRD YEAR AND OVER

- 707 Educational Exhibit
Develop a creative educational exhibit on some phase of forestry. The exhibit may utilize any visual technique. The total is not to exceed dimensions of 3' x 3'.
- 708 Stem, Leaf, Fruit Display
Collect and mount 5 stems, leaves, and fruit representing 5 forest trees found in Kentucky. Follow closely the instruction in the forestry book, "4-H Forestry Project Unit 1 – Introducing Yourself to Trees." (4DF-01PA or most recent version) Activity #2 are to be followed, including the 2' x 3' exact size.
- 709 Leaf Collection 3rd year
Collection of 50 leaves representing 50 forest trees found in Kentucky. Follow same mounting instructions as First Year project.

4-H GEOLOGY - DIVISION 6028

1. Display boxes must be no less than 16" nor more than 20" vertically and no less than 22" nor more than 24" horizontally.
2. All boxes must have a Plexiglas cover that can be easily removed for judging.
3. Each exhibit must be secured with a lock. Attach a key to box with your name and county firmly attached to key. Key will be returned to 4-H agent. Keep another key in case State Fair key is misplaced.
4. Hinges and Locks: Make flush or mount on sides or top of boxes so boxes will sit level.
5. Fabric: If fabric is used, use a fabric glue to adhere entire piece of fabric to box. Suggested fabrics are felt, velveteen.
6. Rocks, Minerals and Fossils: should be firmly attached to the box and should be numbered to correspond with the number on the Geology Identification Labels. (4DB-01S0)
7. Boxes will be displayed on their side, not flat. Therefore, larger specimens must be attached near the lower portion of the box.
8. Geology Identification Labels (4DB-01S0) available from the County Extension Office are the only labels acceptable.
9. Exhibits will be disqualified for class champion if:
 - a. Box does not fit in the size stated in rule 1
 - b. Box contains too few or too many specimens
 - c. Box does not have a Plexiglas cover that can be opened

- d. Labels not correctly filled out.
- e. Specimen is mounted jewelry
- f. Specimen is mounted and polished
- g. Specimen and label are not numbered
- h. Specimens are not arranged in numerical order
- i. Duplicate specimens are used to reach minimum number

Classes are:

*For each of the classes, specimens may consist of rocks, minerals and or fossils. There is a separate label for rocks, minerals and/or fossils (three different labels).

- 715 First Year Geology - consisting of 15 different specimens.
- 716 Second Year Geology - consisting of 25 different specimens (up to 12 may be from previous project year) (no more than 2 boxes)
- 717 Third Year Geology - consisting of 35 different specimens (up to 17 may be from previous project year) (no more than 2 boxes)
- 718 Fourth Year Geology - consisting of 50 different specimens (up to 25 may be from previous project year) (no more than 2 boxes)
- 719 Special collection for fifth year or over - creative, advanced display of member=s choosing which depicts a geological process, theme, story, or manufacturing process. Posters, notebooks and written narratives may be included.

4-H ARTS - DIVISION 6029

All art classes are from Portfolio Pathways and Sketchbook Crossroads 4-H Core Curriculum except for Trends and Heritage Crafts. Exhibitors are limited to two classes per sections A, B and C for a total of six. Exhibits will be disqualified for class champion if:

- a. Pictures or other hanging items do not have an attached wire or hook hanger (wire hangers must be secure and attached to the frame for paintings and drawings only). No wire hooks taped to back. All hangers must support the weight of the item. Pictures should be framed and ready for hanging.
- b. Pictures are not mounted on firm mat and/or framed with attached hanger. No poster board or foam core board allowed.
- c. Seniors do not have an artist statement.
- d. If subject matter is not family friendly.
- e. Drawings and paintings must be framed. NO GLASS only plexiglass.

SECTION A: Portfolio Pathways

Painting

- 727a Junior Acrylic: (p.12) Using acrylic paint.
- 727b Senior Acrylic: (p.12) same as Junior.
- 728a Junior Water Color: (p.14) Using watercolors and a variety of techniques to complete a painting on watercolor paper.
- 728b Senior Water Color: (p.14) same as Junior.
- 729a Junior Abstract: (p.18) Using acrylic paints experiment with abstract designs to complete a painting.
- 729b Senior Abstract: (p.18) same as Junior
- 730a Junior Sand Painting: (p.20) On a 8"x10"x1/4" sanded plywood or particle board. Explore painting with colored sand mixed with glue.
- 730b Senior Sand Painting: (p.20) same as Junior.
- 731a Junior Self Portrait: (p.22) using a medium of your choice. Complete a self-portrait using any drawing or painting technique.
- 731b Senior Self Portrait: (p.22) same as Junior.
- 732a Junior Human Action: (p.24) Using acrylic or watercolor paints, capture human action through the use of vivid colors, lines and texture when painting.
- 732b Senior Human Action: (p.24) same as Junior.
- 733a Junior Oil Painting: (p.26) Using oils on canvas or canvas board. Experiment with different techniques of laying oil to canvas to create a finished painting.
- 733b Senior Oil Painting: (p.26) same as Junior.
- 734a Junior Oil Pastel: Using oil pastels on canvas, or canvas board, create a finished work of art.
- 734b Senior Oil-Pastel same as Junior

Printing

- 735a Junior Intaglio Collagraph Print: (p.38) On 8 ½"x11" paper. Create a collagraph block at least 6"wide and create any color print using intaglio printing method.
- 735b Senior Intaglio Collagraph Print: same as Junior.
- 736a Junior Blueprint Paper Print: (p.40) On blueprint paper create a sun print; at least 5 ½ x 8 ½" using cyanotype or Light or sun sensitive paper.
- 736b Senior Blueprint Paper Print: same as Junior.

- 737a Junior Etched Plexiglas: (p.42) Create an original print using an etched Plexiglas plate. The print should be at least 5 ½" x 8 ½". Plexiglas etching uses the intaglio method of printing.
- 737b Senior Etched Plexiglas: same as Junior.
- 738a Junior Wax Resist Print: (p.44) Create intricate designs for printing using a wax resist method.
- 738b Senior Wax Resist Print: same as Junior.
- 739a Junior Tire Stamp Print: (p.46) Cut pieces of inner tube tire, glue it onto a wood block, and print using a stamp pad. Entry must include print and stamp.
- 739b Senior Tire Stamp Print: same as Junior.
- 740a Junior Linoleum Print: (p.48) Create linoleum print using linoleum block on paper.
- 740b Senior Linoleum Print: same as Junior.
- 741a Junior Hand Drawn Negative Photograph: (p.51) You will draw a negative on frosted acetate, then print onto photographic paper (8"x10") as a positive, using a photographic process.
- 741b Senior Hand Drawn Negative Photograph: same as Junior.
- Graphic Design
- 743a Junior 5 Color Design: (p.62-63) Create two 8"x10" pieces. 5 color designs are identical except for one color. Change one color to create a second design. Use paint, paper or computer graphics program. Mount on mat board.
- 743b Senior 5 Color Design: same as Junior.
- 744a Junior Computer Drawing: (p.70) Explore the use of computer tools and techniques to doodle, draw and replicate images. Print out each design showing the use of various tools.
- 744b Senior Computer Drawing: same as Junior.
- SECTION B: Sketchbook Crossroads
- Drawing
- 745a Junior Contour Drawing: (pg.12) Draw objects using the contour drawing method. Do 2-3 drawings of the same object from different angles.
- 745b Senior Contour Drawing: same as Junior
- 746a Junior Two Point Perspective: (pg. 16) On sketch paper, draw a two point perspective that has a point at each end of a horizontal segment.
- 746b Senior Two Point Perspective: same as Junior.
- 747a Junior Circular Shape Object: (pg.18) Draw a subject to fit a circular shape.
- 747b Senior Circular Shape Object: same as Junior.
- 748a Junior Color Pencil: (pg.20) Draw with colored pencils and use turpenoid to blend the colors.
- 748b Senior Color Pencil: same as Junior.
- 749a Junior Pen and Ink: (pg.22) Sketch animals or other objects using pen and ink.
- 749b Senior Pen and Ink: same as Junior
- 750a Junior Calligraphy: (pg. 24) On 8 ½ by 11 paper, rewrite a quote, poem or pledge using Calligraphy. Make sure to include the author on the piece.
- 750b Senior Calligraphy: Same as Junior
- 751a Junior Cartooning: (pg.27) Cartooning is a simple process of making line drawings show sequential motion. Create your own cartoon character showing motion. Must create at least three blocks.
- 751b Senior Cartooning: same as Junior.
- Fiber Arts
- 752a Junior Felted Wool Applique Mat: (p.31) Felt wool to create a design. Applique design to a felted wool mat. Mat size of mat 18"x24". Use 100% wool to felt.
- 752b Senior Felted Wool Applique Mat: same as Junior.
- 753a Junior Cotton Linter Bowl: (pg. 34) Experiment with cotton linter using molds and shaping the linter to form bowls. Enhance the cotton with colored pencils, threads, floss, dried flowers to make a unique creation.
- 753b Senior Cotton Linter Bowl: same as Junior.
- 754a Junior Batik Fabric: (pg.37) Using natural fiber fabric. Create a unique fiber artwork using dyes and the wax resist method.
- 754b Senior Batik Fabric: same as Junior.
- 755a Junior Lap Loom Woven Place Mat: (pg.40) Set up a lap Loom. Using several colors or types of yarn create a woven placemat.
- 755b Senior Lap Loom Woven Place Mat: same as Junior
- 756a Junior Inkle Loom Basket: (pg.44) Weave 4-6 stripes that are identical. Sculpt a basket out of several woven strips by stitching them together in a spiral. Manipulate the strips to form the bottom of the basket.
- 756b Senior Inkle Loom Basket: same as Junior.
- Sculpting
- 757a Junior Clay: Create an item from clay either self-hardening or firing required.
- 757b Senior Clay same as Junior.
- 758a Junior Clay Bust: (pg.57) Sculpt a head with facial features out of clay.
- 758b Senior Clay Bust: same as Junior
- 759a Junior Mask: (pg.61) Create a mask using clay emphasizing unique form and texture to portray feelings.
- 759b Senior Mask: same as Junior.

- 760a Junior Cardboard Sculpture: (pg.65) Create a piece of textured relief sculpture using corrugated cardboard stacked and glued together. Sculpt with an Exacto® knife.
- 760b Senior Cardboard Sculpture: same as Junior.
- 761a Junior Flower Wire Sculpture: (pg.67) Using wire and nylon cloth create a freestanding sculpture.
- 761b Senior Flower Wire Sculpture: same as Junior.
- 762a Junior Plaster of Paris Carving: (pg.69) Using a plaster of paris block, carve a form that has a concave and convex surface and allows space to flow around and through it.
- 762b Senior Plaster of Paris Carving: same as Junior.

SECTION C: Art Trends and Traditions

This section will be highlighting the latest trends in art while honoring our heritage. Art trends will be selected every two years. Heritage crafts will be open to any heritage craft. Documentation for the Heritage Craft Classes is REQUIRED. If required documentation is not attached the item will be disqualified. You may enter one entry per year in this section.

- 763a Junior Art Trends – Mixed Media. Mixed media is defined employing more than one medium.
- 763b Senior Art Trends—Mixed Media
- 764a Junior Heritage Arts Other
- 764b Senior Heritage Arts other
- 764c Junior Basket Making
- 764d Senior Basket Making
- 764e Junior Jewelry
- 764f Senior Jewelry
- 764g Junior Leather Craft
- 764h Senior Leather Craft

4-H PHOTOGRAPHY - DIVISION 6030

- All pictures must be taken by the 4-Her during the current 4-H year. Exhibitors may enter 6 classes from general photography and any of the horticulture classes in addition.
- Digital images may be submitted in all classes, unless otherwise stated.
- Photos may be either Black and White or Color unless otherwise stated.
- All classes (including Horticulture) with one photograph should be mounted on 10" x 16" mat board (no poster board or foam core board accepted). Single photographs are limited to a maximum size of 8"x12".
- All classes (including Horticulture) with more than one photograph must be mounted on 16" x 20" mounting board (no poster board or foam core board accepted). Pictures cannot be framed or matted with colored mat board.
- Each picture must be mounted securely. Rubber cement or dry mounting tissue recommended. DO NOT use photo mounting corners.
- Pictures may be cropped (trimmed).
- Entries must use current identification tag securely mounted to front of the mat board in the lower right corner.
- Absolutely nothing on front of mat board except photographs and ID tag. Any other materials are to be mounted on the back.
- Photos (except horticulture classes) must include the following a description. The description must be typed, on white paper or label, and placed directly on the back of the matboard the photograph it is identifying. The description must include the following:
 - Class
 - Subject
 - Location
 - Equipment Used (Specific Camera, if a Point and Shoot Camera, cell phone photograph, or DSLR); If using Point and Shoot or DSLR camera, please list specific Lens, Tripod, Trigger Release, Lighting, etc.)
 - Skill Applied from 4-H Photography Curriculum [specific page from curricula guide should be listed]

Photography will be judged on, but not limited to: technical, impact, composition, creativity, presentation, sequence or collection.

Natural Resources

- 764a Forest – Photograph showing Forest (large area dominated by trees) and/or Forestry Activities
- 764b Water – Photograph showing still or moving natural water system or water activity
- 764c Wildlife – Photograph showing unrestrained and live wildlife in natural habitat; Domestic animals are not permitted
- 764d Natural Scenic – Photograph showing natural scene [manmade object not as subject of photograph]
- 764e Native Plants – 1 – 5 Photograph(s) of Kentucky Native Flora in natural area [not garden] - a plant that occurs naturally in the place where it evolved.
- 764f Insect – Photograph of insect(s) unrestrained and live in natural habitat

Agriculture

- 765a Livestock – Photograph uses livestock as the main subject.
- 765b Crops – Photograph uses crops as main focus.
- 765c Life Cycle – 1-5 photograph(s) clearly showing at least one phase of life cycle (birth, growth, death).

- 765d Agriculture Scenic – Landscape photograph with agriculture as the main focus.
 765e Farm Equipment/Implement – Photograph with agriculture equipment/implement as main subject.
 765f Modern or Historic Practices – 1-5 photograph(s) showing a singular, comparison, or advancement in an agriculture practice.

Leadership

- 766a Formal/Candid Portrait – Photograph that shows a person as the main subject. [A formal portrait is not a snapshot but a carefully arranged pose under effective lighting conditions and a candid photograph is a photograph captured without creating a posed appearance.]
 766b Urban Scenic – Landscape Photograph showing an Urban setting as the main subject.
 766c Event – 1-5 Photograph(s) that are focused on a community event.
 766d Service – Photograph that displays service learning (community service) as the main subject.
 766e 4-H Event – 1-5 Photograph(s) that cover a 4-H event you attended.
 766f National/International – 1-5 Photograph(s) that focus on a National or International experience.

FCS

- 767a Family – Portrait or Candid Photograph of family members or event
 767b Food Preparation – 1 – 5 Photograph(s) showing meal or single food item preparation
 767c Culture – Photograph showing unique perspective of local or global culture
 767d Fashion Portrait – Portrait Photograph with modeled fashion as the primary subject
 767e Patterns/Design – Photograph Showing Natural or Manmade Pattern / Design
 767f Residential – 1 – 5 Photograph(s) showing residence or residential area from inside and outside.

SET

- 768a Mechanics – 1 – 5 Photograph(s) showing the applied concept of force and energy.
 768b Architecture – Photograph showing the product of planning, designing, and constructing buildings or any other structures.
 768c Energy – Showing the creation or expulsion of energy
 768d Movement – 1 – 5 Photograph(s) of object showing movement [manmade]
 768e Construction – 1 – 5 Photograph(s) showing the steps of construction for any built structure
 768f Machinery/Equipment – Photograph showing machinery or equipment used in construction, engineering, or repair.

Health

- 769a Physical Activity – Photograph that shows physical activity as the main subject.
 769b Competitive Sports – Photograph that shows a sport as the main subject.
 769c Healthy Lifestyle – Photograph that expresses healthy lifestyles as the main subject.
 769d Healthy Foods – 1-5 Photographs focused on healthy food or meal choices.
 769e Careers in Health – 1-5 Photographs that focus on Careers in the health and service fields as the main focus (ex. Fire, law, medicine, emergency, education).
 769f Dealing with Stress – Photograph that illustrates a hobby or interest that helps an individual reduce stress.

Communications/Expressive Arts

- 770a Music – Photograph showing music (written or performed)
 770b Instrument/Art Utensils – Still life photograph using musical instruments or art equipment as primary subject
 770c Cultural Arts Event – 1 – 5 Photograph(s) showing attended cultural arts event (Art Show, Musical Performance, etc.)
 770d Arts Creation – 1 – 5 Photograph(s) with the design, construction, and/or creation of art as the primary subject
 770e Created Art in Your Community – 1 – 5 Photographs showing completed local art in your county.
 770f Word(s) – Single word spelled out using built or natural environment or words within the community with personal significance or meaning.

HORTICULTURAL PHOTOGRAPHY EXHIBITIONS

Horticulture is the science, art, technology and business concerned with intensively cultivated plants that are used by people for food, for medicinal purposes, and for aesthetic gratification.

Horticulture is divided into two categories:

The cultivation of plants for food (pomology and olericulture):

- Pomology deals with fruit and nut crops. (not included in photography classes)
- Olericulture deals with herbaceous plants for the kitchen, including, for example, carrots (edible root), asparagus (edible stem), lettuce (edible leaf), cauliflower (edible flower), tomatoes (edible fruit), and peas (edible seed). (included in photography classes)

Plants for ornament (floriculture and landscape horticulture).

- Floriculture deals with the production of flowers and ornamental plants; generally, cut flowers, pot plants, and greenery. (included in photography classes)
- Landscape horticulture is a broad category that includes plants for the landscape, including lawn turf, but particularly nursery crops such as shrubs, trees, and climbers. (not included in photography classes)

For the purposes of the Kentucky 4- Horticulture Photography Contest, only photographs representing the areas of Olericulture and Floriculture will be accepted.

HORTICULTURAL PHOTOGRAPHY CLASSES

- 771 Single black and white. Horticultural subject or activity. (Maximum size: 8" x 12")
- 772 Single color. Horticultural subject or activity. (Maximum size: 8" x 12")
- 773 Sequence of 4 photographs. B&W or Color representing a horticultural event or activity that tells a visual story, chronologically, without the use of words.
- 774 Horticulture collection (B&W or color), consisting of 6 photographs.

4-H SEWING - DIVISION 6032

- 1. Garments must be clean.
- 2. Send NO accessories with any clothing entry.
- 3. Label each clothing item.
- 4. Items must be handmade; no ready-to-wear/factory made items will be accepted for judging. An item accepted that does not meet the class requirements will be judged, but will not be considered for class champion.

Junior Division for 4-H'ers Ages 9-13

(Publications are available at the Extension Office)

Unit I – Let's Learn to Sew: Beginner skills

- 790A Unit I Clothing Option: Shorts, pants, or skirt with casing waistline (elastic and/or drawstring). Garment must be made from woven fabric and include the following: straight machine stitching, appropriate visible seam finish, and machine stitched hem. This class is for ages 9-13.
- 790B Unit I Non Clothing Option: Apron or Drawstring backpack/shoulder bag or tote bag with fabric handles OR a laundry bag. Item must be made from woven fabric and include the following: straight machine stitching, appropriate visible seam finish, and a casing or machine stitched hem. This class is for ages 9-13.

Unit II – Let's Get to the Bottom: Beginner skills

- 791 Unit II Clothing Option: Skirt, sundress, shorts or pants. *Exhibit must be made from woven fabric and include the following: enclosed seams, appropriate seam finish, interfacing, zipper, and a facing or waistband. This class is for youth ages 9-13.*
- 792 Unit II Non Clothing Option: Zippered tote bag, purse, garment bag, or duffle/gym bag. *Exhibit must be made from woven fabric and include the following: enclosed seams, appropriate seam finish, interfacing, and 14" or longer zipper. (Pre-quilted woven fabric and recycled woven fabric are acceptable fabric choices but use is not required.) This class is for youth ages 9-13.*

Unit III – Top it Off: Beginner skills

- 793 Unit III Clothing Option: Shirt, simple jacket, one piece dress with no waistline, cape with a hood or collar, bathrobe, or vest with lining or facing. *Garment must be made from woven fabric and include the following: buttons and buttonholes. A simple lining, trim, collar, and sleeves may be included but are not required. This class is for youth ages 9-13.*
- 794 Unit III Non Clothing Option: Backpack with lining, applied trim, and button/buttonhole closure. *This class is for youth ages 9-13.*

Unit IV – Stretch Your Knit Skills: Beginner skills

- 795 Unit IV Stretch Your Knit Skills: 1 or 2 piece complete outfit made from knit fabric; such as a dress, top and bottom, pajamas, or nightshirt. *All garment pieces must be made from knit fabric with a limited amount of one-way stretch; rib knit may be included for neckband and arm/leg band trim only. This class is for youth ages 9-13.*

Unit V – Moving on Up: Intermediate skills

- 796 Unit V Moving on Up: one-piece complete outfit made from woven fabric; such as a dress, coveralls, or jumpsuit. Item must include at least a zipper and/or buttons and buttonholes. A waistline simple lining, trim, collar, and sleeves may be included but are not required. This class is for youth ages 9-13.

Unit VI – Put it All Together:

- 797 Unit VI Put It All Together Clothing Option: 2 or 3 piece complete coordinating outfit; such as warm up suit; dress with jacket or coat, swimwear with cover-up, jacket or shirt with slacks/ skirt. At least one piece must include sleeves and a collar/hood. No simple casings. Fabric choice may be woven, knit or a combination of the two. This class is for ages 9-13.
- 798 Unit VI Put It All Together Non Clothing Option: Original design tote bag or bicycle carrier and documentation folder - Using Wild Ginger Software, Inc. **Wild Things!** Software program, select the Tote Bag option and design a bag that includes at least 2 pockets. Be creative with your design. Required elements: at least 2 pockets; minimum size of 12 inches in height and 12 inches in width. Item must have at least one functional zipper; and creative stitchery or applied trim to personalize your bag. Optional elements: lining, other type closure as design dictates [button(s), hook and loop tape, or snap(s)]. If bag is not lined, it is suggested that the seam allowances be finished with a bound seam finish. This class is for ages 9-13. **In the documentation include:** your name, your county, the name of the unit, class entered, number of years you have been sewing, cost, and the printed design sheets (one for each pocket selected) from the program, and answers to the following questions:
1. How did you choose the size of your tote bag? Did you use any of the default settings in the program?
 2. Did you have any trouble using the software or printing your pattern? Explain
 3. Did you download the Wild Things! Program to your home computer or use the program at your county extension office?
 4. Did you make any changes to your pattern after it was printed? If so, tell what you changed.

Unit - Up Cycle It! : Advanced Skills

- 799A Up Cycle It! Junior—item sewn from recycled/repurposed garments and documentation folder: Sew a garment or fashion accessory from previously worn garments. Recycled fabric is to be the major component of the item. Recycled garments may be cast-offs from the member's family/friends or purchased at a yard sale or similar low cost source. **Documentation is required.** In documentation include the following: your name, your county, the name of the unit, class entered, number of years you have been sewing; a **"before" photo** of all recycled items used; source of the recycled garment; how the design was created; and any design drawings that were used in the creation. Place documentation in a folder or plastic sheet protector. "Deconstructed" t-shirts which do not include sewing skills do not fit this class. Items for the home do NOT fit this class. Items which do not include sewing as a major means of reconstruction are not eligible for this class. This class is for ages 9-13 with sewing skills.
- 799B Smart Clothing and documentation- One soft circuit item created using conductive thread and hand sewing and/or machine sewing skills, LEDs, and battery pack. May include items such as LED bracelet, an illuminating fashion applique, or an illuminating garment constructed by the member. Website: <http://styleengineers.org/module/smart-clothing/> This class is for ages 9-13.

Senior Division for 4-Hers age 14-18

Senior members may complete the projects in any order and may repeat a level more than one year.

Let's be Casual- for ages 14-18.

- 800 Let's Be Casual--Clothing Option: 1 or 2 piece complete outfit made from knit or woven fabric such as a dress, top and bottom, simple pajamas, or robe. This class is for ages 14-18.
- 801 Let's be Casual--Non Clothing Option: 2 coordinating fabric accessories from the following: apron, oven or BBQ mitt, wallet, garment bag, purse, backpack or duffel bag. This class is for ages 14-18.

Dress it Up- for ages 14-18.

- 802 Dress It Up 1 or 2 piece complete outfit, such as a dress, suit, pantsuit, sport coat and slacks. Fabric choice may be woven, knit or a combination of the two. This class is for ages 14-18.

Match it Up- for ages 14-18.

- 803 Match It Up--Clothing Option: Choose at least one item from each group to make a complete 3 or 4 piece coordinated outfit:
- Shorts, pants, or skirt
 - Top, blouse, or shirt
 - Vest, jacket, or sweater
- At least one piece is required to have regulation set in sleeves. Fabric choice may be woven, knit or a

combination of the two. An accessory item may be included as the fourth piece. This class is for ages 14-18.

- 804 Match It Up--Non Clothing Option: 3 or 4 piece coordinating sport/luggage/travel or fashion accessories set. Ideas include, but are not limited to, a wallet, purse, device carrier, backpack, duffel bag, gym bag or bag for bike or vehicle. Among the items chosen, the set must include the use of applied trim, pockets and at least one 14 inch or longer zipper. This class is for ages 14-18.

Creative Expressions- for ages 14-18.

- 805 Creative Expression--Clothing Option: Construct a complete outfit for one of the following activities:

- Halloween, theater, or historic costume
- Uniform for medical, cheerleader, dancer, etc.
- Riding apparel

This class is for ages 14-18.

- 806 Creative Expression--Non Clothing Option: Select one of the following and construct a:

- Fabric doll or animal with a wardrobe of two outfits
- Machine appliquéd specialty flag or decorative banner (minimum size 24 inches x 24 inches)

This class is for ages 14-18.

Leisure Time- for ages 14-18 with advanced skills.

- 807 Leisure Time--Clothing Option: 2 or 3 piece complete outfit. Choose from the following:

- Athletic wear such as leotard, cycling wear, warm-up suit, bathing suit and cover-up, tennis wear
- Pajamas and robe (must use specialty fabric such as terry cloth, flannel, fleece, nylon tricot)
- Raincoat and hat or rain suit

This class is for ages 14-18.

Formal Affair- for youth ages 14-18 with advanced skills.

- 808 Formal Affair--1 or 2 piece complete outfit, such as a prom dress, bridesmaid dress, or tuxedo. Fabric choice may be woven, knit or a combination of the two. This class is for ages 14-18.

Upcycle It!—for youth ages 14-18 with advanced skills

- 809 Upcycle It! Senior—item sewn from recycled/repurposed garments and documentation folder: Sew a garment or fashion accessory from previously worn garments. Recycled fabric is to be the major component of the item. Recycled garments may be cast-offs from the member's family/friends or purchased at a yard sale or similar low cost source. **Additional documentation is required.** In documentation include the following: your name, your county, the name of the unit, class entered, number of years you have been sewing; a **"before" photo** of all recycled items used; source of the recycled garment; how the design was created; and any design drawings that were used in the creation. Place documentation in a folder or plastic sheet protector. "Deconstructed" t-shirts which do not include sewing skills do not fit this class. Items for the home do not fit this class. Items which do not include sewing as a major means of reconstruction are not eligible for this class. This class is for ages 14-18.

- 810 Smart Clothing and documentation: one soft circuit item using conductive thread and hand sewing and/or machine sewing skills, LEDs, and battery pack. May include items such as an LED bracelet, an illuminating fashion applique, or an illuminating garment constructed by the member. Website: <http://styleengineers.org/module/smart-clothing/> This class is for ages 14-18.

4-H NEEDLEWORK - DIVISION 6033 GENERAL GUIDELINES

1. Item(s) must be clean to be accepted for judging. Previous wearing/using is acceptable (and strongly encouraged!), but item must be clean.
2. Items entered must be completed by the exhibitor within the current project year.

CROCHET

- 813 Small Crochet Item made of medium (4) weight yarn: Must include rows of single, half double and/or double crochet stitches. Such as: scarf, purse, belt, hat, pillow, two wash cloths (made from cotton yarn), or pair of slippers. Scarf must be at least 24" long.
- 814 Large Crochet Item made of medium (4) weight yarn: Must include rows of single, half double and or double

- crochet stitches. Such as afghan, shawl or vest.
- 815 Crochet item made entirely with novelty yarn: Do not use standard medium (4) weight yarn. Must include rows of single, half double, and/or double crochet stitches. Such as scarf, purse, belt, hat, pillow, pair of slippers, afghan, shawl or vest. Scarf must be at least 24" long.
- 816 Crocheted Item made using the Granny Square technique: May use any weight yarn, single or multiple colors. Such as purse, shawl, afghan or hat.
- 817 Crocheted Item made using intermediate skills/pattern crochet stitches: Such as: hat, belt, scarf, pair of mittens, pillow, sweater, vest, shawl or baby blanket, doily (made from bedspread (0) weight thread) or set of 5 different ornaments (made from bedspread (0) weight thread using intermediate skills/stitches. Include one or more pattern stitches—shell, arch, diamond, bobble, snapdragon, popcorn, cross, puff, cluster, or seed/granite. Can include one or more colors in alternating rows (stripes). Scarf must be at least 24" long.
- 818 Crochet item using intermediate skills for shaping and fitting multiple pieces together. Items must include increase and decrease. Such as stuffed toys or pair of slippers.
- 819 Item or pair of items using advanced crochet skills: include one or more of the following advanced skills: Beadwork, filet crochet creating plaids, geometric designs or checks, making novelty crochet articles.
- 820 Item or pair of items using advanced crochet skills to create your own design. Original designs must include a copy of directions, notes and diagrams used to create the item(s). Suggested items include: multi-colored hat, purse, collar (made with bedspread-weight cotton thread), sweater, jacket, afghan or coat.

HAND EMBROIDERY

All projects are to be a completed item (examples: framed piece, pillow, wall hanging, pot holder, eyeglass holder, etc.) or can be created on a purchased item. (Example: pillowcase, clothing, tote bag, purse, bib, dishtowel, etc.) Items may be made from purchased kits that meet the individual project guidelines.

- 821 Redwork: Embroidery item made with single color of floss such as "Redwork," using red floss. Must use the stem stitch and have an embroidered area equivalent to 3x3 inches or larger.
- 822 Stamped Cross Stitch: Cross stitched design stamped (printed/drawn) on plain woven fabric and have an embroidered area equivalent to 3x3 inch or 2x16" border or larger.
- 823 **Candlewicking**: Candlewicking design stamped on plain woven fabric. Must include stem/outline, satin and colonial knot stitches and have an embroidered area equivalent to 3x3 inches or larger.
- 824 **Stamped Embroidery**: Embroidery design printed/drawn on plain woven fabric or felt. Must include three or more of the following different stitches (stem/outline, lazy daisy, running, straight, French knot, satin, blanket, chain, or back stitch). May use more than one color of floss. Must have an embroidered area equivalent to 5 x 7 inches or larger.
- 825 Free Embroidery: Embroidery design used to embellish a base fabric without the design being drawn on the fabric. Must include three or more of the following different stitches (stem/outline, lazy. Daisy, running, straight, French knot, satin, blanket, chain, or back stitch). May use more than one color of floss. Must have an embroidered area equivalent to ~~5x7~~ 3x3 inches or larger. Embroidery may embellish design lines on the item.
- 826 Cross Stitch on Gingham: Cross stitch on ¼-inch gingham and have an embroidered area equivalent to 5x7 inches
- 827 Counted Cross Stitch on 11 Count Aida Cloth: must have an embroidered area equivalent to 5x7 inches or larger.
- 828 Chicken Scratch (on gingham). Chicken Scratch (also known as snowflake embroidery) on ¼ or smaller checked gingham fabric. Must have an embroidered area equivalent to 5x7 inches or larger.
- 829 Crewel Embroidery: crewel embroidery design on linen or cotton twill fabric using crewel or Persian Yarn: must have an embroidered area equivalent to 5x7 inches or larger.
- 830 Counted Cross Stitch on 14 Count Aida Cloth: must have an embroidered area equivalent to 5x7 inches or larger.
- 831 Counted Cross Stitch using waste canvas: Must have an embroidered area equivalent to 5x7 inches or larger.
- 832 Huck Embroidery: huck embroidery on huck towel/toweling creating a minimum 2 inch wide border design.
- 833 Swedish Weaving: on monk's cloth creating a minimum of 6 inch wide border design.
- 834 Ribbon Embroidery Using Silk Ribbon for 5 or more embroidery stitches. Design may also include use of embroidery floss in addition to the silk ribbon.
- 835 Counted cross stitch on 8 or 22 count even weave or aida cloth. Must have an area of 5x7 inches.
- 836 English Smocking: smocked area must be 4x6 inches or larger. Must include 5 different smocking/embroidery stitches.

KNITTING:

- 837 Small/simple knitted item(s): Items such as a hat, small pillow, purse, scarf, belt, or two washcloths (no larger than 10" X 10" each); Use medium (4) worsted weight yarn. Solid color yarn only (no ~~or~~ variegated yarn or color change is acceptable). Wash cloths should be made from worsted weight cotton yarn. Items are limited to those

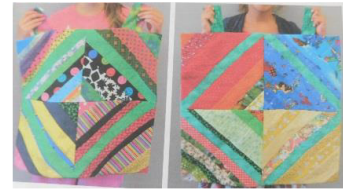
that include garter stitch, stockinette stitch, and/or ribbing stitch.

- 838 **Knitted Item created using Self-striping or Variegated Yarn(s)**: Use some yarn other than single color medium (4) worsted weight yarn. Such as a purse, scarf, hat, leg warmers, fingerless mittens, etc.
- 839 **Larger/simple knitted item(s)**: Items such as a pair of mittens; pair of slippers, shawl, cowl, or lap/baby blanket. May use yarn other than worsted weight yarn. Multiple colors and at least one pattern stitch may be used in addition to garter stitch, stockinette stitch, and/or ribbing stitch.
- 840 **Knitted project focused on Shape—Garment or Fashion Accessory**: Exhibit one item or a pair of items using pick up stitches, and/or knitting in the round. Item must include increase and/or decrease. May use yarns other than medium (4) worsted weight yarn. May include simple color changes (stripes or duplicate stitch). Ideas such as: gloves, hat, mittens, fingerless mittens, socks, skirt, sweater, or vest.
- 841 **Knitted project focused on Shape—Stuffed Toy**: Exhibit one item using pick up stitches, and/or knitting in the round. Item must include increase and/or decrease. May use yarns other than medium (4) worsted weight yarn. May include simple color changes (stripes or duplicate stitch).
- 843 **Knitted project focused on Color Design**: Exhibit one item or a pair of items using charted designs or your own design. Chartist designs may include color changes such as Fair Isle, Intarsia, and/or Mosaic knitting. All entries must include a copy of directions, notes, and any diagrams used to create the item. Ideas such as: throw pillow, afghan (minimum size 45-x 60-inches), shawl, holiday stocking, purse, pair of socks, sweater, etc.
- 844 **Knitted project focused on Textural Design**: Exhibit one item or pair of items using charted designs or your own design. Chartist designs must include multiple pattern stitches such as Aran Isle knitting or lace knitting. Knitting with beads is also acceptable. All entries must include a copy of directions, notes, and any diagrams used to create the item. Ideas such as: throw pillow, afghan (minimum size 45-x 60-inches), shawl, holiday stocking, purse, pair of socks, sweater.

-

QUILTING – All projects are to follow these guidelines/requirements:

1. Quilt must contain 3 layers: top (hand or machine stitched,) batting, backing.
2. If edge finish is not described in the class description the following are accepted options:
 - Stitched and turned- Backing is placed right sides together with top, stitched and turned. Opening is sewn closed. No binding needed.
 - Self-binding-Backing is brought to the front, folded, and stitched to the quilt.
 - Applied binding- Separate binding applied with mitered corners.
 - Decorative stitched edge- optional for Class #851, #856 and #858 only.
3. Quilting – minimum 4" apart, unless otherwise indicated in class description using the following methods:
 - Hand tack
 - Hand quilt
 - Use domestic sewing machine quilt
 - No long arm or hooped embroidery quilting accepted
4. Size is listed by class with measurements of perimeter (total outer edge measurement.) Ex. 120" = 30" square or 25" x 35" rectangle – or any other combination of 120". Can be smaller or larger as noted in class information.
5. Hanging sleeve or tabs are optional except in #846.



- 845 **Strip/String Quilt**: Use strips of varying widths to make 4-blocks, sewn together for the top. Stitched and turned or self-binding suggested. Perimeter not to exceed 132". Quilting lines can be up to 8" apart. Suitable for beginner.
- 846 **Wall Hanging**: Begin with a square or rectangle piece of focus fabric or printed panel. Add at least 2 borders to the center block/panel. Add fabric loops for hanging. Finish with stitch and turn. Quilting can be stitch-in-the-ditch or echo quilting up to 6" apart. Perimeter not to exceed 132". Suitable for beginner. Hanging sleeve or tabs are required.

847 Four Patch Runner: Hand or machine piece 3 four patch blocks. Each four-patch must include at least two 6-inch square patchwork units made with square and/or rectangle pieces (ex. four patch, rail fence.) No triangle pieces. Finished quilt should measure 12"x 36". Quilting lines can be up to 6" apart. Stitch and turn or self-binding suggested. Suitable for advanced beginner.

848 Quilt-As-You-Go Quilt: Create a quilt using any quilt-as-you-go method. Add rows to the edge so that face fabric, batting and backing are attached to the previous piece. There is no additional quilting needed. Applied binding with mitered corners. Perimeter should not exceed 144". Suitable for the advanced beginner



849 Small Patchwork Quilt: Sew four 12" square blocks or nine 9" square blocks with sashing and/or borders. Triangle pieces and/or machine applique' are required. Hand or machine quilt. Applied binding with mitered corners. Finished quilt not to exceed 36" x 36 ".

850 Dimensional Pieces, Miniature Scale or Landscape Design Quilt: Create a quilt using dimensional pieces, miniature scale, or landscape design techniques. May include fused fabric, dimensional additions, hand or machine applique, free motion quilting and/or decorative edge finish. Perimeter size a minimum 100" and a maximum size of 200".

851 Squares or Strips Precut: Sew a top using pre-cut squares (2½" or 5",) 2½" x 42" (WOF) strips or a combination of these. Applied binding with mitered corners. Perimeter not to exceed 160".



852 Appliquè: Pillow with appliqué: Choose a pattern to applique by hand or any machine stitch onto a background. Raw edge applique is acceptable Finish into a 14" or 16" pillow. Quilting as appropriate for the piece.

853 Foundational paper piecing: Use foundation paper piecing techniques for the quilt top. Applied binding with mitered corners. Perimeter maximum 200".

854 English Paper Piecing: One-inch hexagons (7 total) sewn together by English Paper Piecing method to create 2 individual coasters using the stitched and turned method. Finished size is approximately 5" diameter. Optional: hexagon motif can be appliqued onto a larger fabric piece and be finished with batting and backing. Self-binding or attached binding is acceptable. Small amount of quilting is acceptable

855 Non-traditional Fabrics Quilt: Sew a pieced top using non-traditional materials such as t-shirts, ties, bandanas, or denim. T-shirts must have interfacing and have sashing separating each block. Cotton fabric or fleece may be used for backing. Quilting must be done by the 4-H'er and be appropriate for the design. Perimeter must be larger than 200".

856 Original Design Quilt: Quilt top created by the 4-H'er. Must submit original design with the quilt and an explanation of the techniques used in the quilt. Quilting must be done by the 4-H'er and be appropriate for the design. Applied binding with mitered corners or decorative edge finish appropriate for the design. Perimeter minimum 144".

857 Crazy Quilt Patchwork: Blocks constructed of irregularly shaped fabric pieces (can be specialty fabrics) embellished with a combination of ribbon work, specialty thread, embroidery stitches, and/or beadwork creating a finished crazy quilt design. The design can be created by hand or machine. Border is optional. Hand tacking is suggested quilting method. Applied binding with mitered corners. Minimum perimeter size 48" but not to exceed perimeter of 160".

4-H FOODS EXHIBITS - DIVISION 6035

(Includes Breads, Food Preservation and General Foods)

*All entries must be made using the exact recipe in the 4-H project manual. Project manuals are available at the Extension Office.

All recipes are located in the **4-H Fair Recipe Book** at <http://4-h.ca.uky.edu/content/food-and-nutrition> and also in the publication identified in the class description.

Muffins

841 Three **Oatmeal Muffins:** Use recipe in **4-H Cooking 101**, p. 54.

842 Three **Cheese Muffins:** Use recipe in **4-H Cooking 201**, p. 49.

Biscuits

- 843 Three **Rolled Biscuits**: Use recipe in **4-H Cooking 201**, p. 50.
 844 Three **Scones**: raisins may be substituted for dried cranberries. Use the recipe in the **4-H Fair Recipe Book** at <http://4-h.ca.uky.edu/content/food-and-nutrition>.

Quick Breads

- 845 Three **Cornmeal Muffins**: Use the recipe in the **4-H Fair Recipe Book** at <http://4-h.ca.uky.edu/content/food-and-nutrition>.
 846 Three pieces of **Coffee Cake with Topping**: Use recipe in **4-H Cooking 101**, p. 59. Nuts are optional.

Cookies

- 847 Three **Chewy Granola Bars** (gluten-free): Use recipe in **4-H Cooking 101**, p. 35.
 848 Three **Brownies**: Use recipe in **4-H Cooking 101**, p. 67. Nuts are optional.
 849 Three **Snickerdoodle Cookies**: Use the recipe in the **4-H Cooking 201**, p. 88.

Cakes

- 850 Half of one 8" or 9" layer **Rich Chocolate Cake** (no icing): Use recipe in **4-H Cooking 301**, p. 116.
 851 Half of one 8" or 9" layer **Carrot or Zucchini Cake** (no icing): Use recipe in **4-H Cooking 301**, p. 119. May use carrots or zucchini.
 852 $\frac{1}{4}$ of a **Basic Chiffon Cake**: Use recipe in **4-H Cooking 401**, p. 118. Do not use variations.

Pies

- 853 One whole **Double Crust Apple Pie**: Use recipes in **4-H Cooking 401**, p. 105 and 97. Leave pie in the disposable pie pan and place all in a zip-type plastic bag. May use spice variation if desired.

Yeast Breads

- 854 Three **Cinnamon Twists** (no icing): Use recipe in **4-H Cooking 301**, p. 42 & 44.
 855 Three **Soft Pretzels**: Use recipe in **4-H Cooking 301**, p. 48. Use any one topping listed.
 856 One loaf **Oatmeal Bread**: Use recipe in **4-H Cooking 401**, p. 25.

Bread Made in a Bread Machine

- 857 One loaf **Honey Whole Wheat Bread** made in a bread machine: Use the recipe in the **4-H Fair Recipe Book** at <http://4-h.ca.uky.edu/content/food-and-nutrition>. May be a 1-pound or 2 pound loaf.

Candy

- 858 Three pieces **Classic Chocolate Fudge**: (size: about one inch square): Use recipe in **4-H Cooking 401**, p. 89. Nuts are optional.

Adapted Food

- 859 Adapted recipe and supporting documents. Using a recipe from another 4-H Foods Exhibit class youth adapt the recipe to meet a dietary restriction. Entry will consist of the food item, the original recipe, and an explanation of the adaption that includes 1) what the adaption is, 2) how this meets the dietary need, 3) the new recipe.

4-H FOOD PRESERVATION EXHIBITS - DIVISION 6036

Clear, clean, standard jars and two piece lids or one piece lids specially designed for home canning must be used. Leave screwbands on jars. Jars not processed by the correct method and jars not sealed or not standard jars will be disqualified. Re-canning of commercially processed foods will be disqualified. Contact the Extension Office for proper labeling.

- 861 Dried Apples: Dry apples according to the instructions in the **4-H Fair Recipe Book** at <http://4-h.ca.uky.edu/content/food-and-nutrition>. Place 12 pieces of dried fruit in a container which is an example of a container suitable for long term storage of dried fruit. Label package with kind of fruit and date processed. Size of the container is not being judged. Publication HE 3-501 may be helpful: <http://www2.ca.uky.edu/agc/pubs/FCS3/FCS3501/FCS3501.pdf>
 862 Salsa: (pint jar or smaller) canned using a boiling water canner. Use the recipe in the **4-H Fair Recipe Book** at <http://4-h.ca.uky.edu/content/food-and-nutrition>. The USDA recommended headspace for salsa is $\frac{1}{2}$ inch. Canning label must be completed by member and affixed to the jar. Publications Home Canning Salsa (FCS3-581) at <http://www2.ca.uky.edu/agc/pubs/FCS3/FCS3581/FCS3581.pdf>, Home Canning Tomatoes and Tomato Products (FCS3-580) at <http://www2.ca.uky.edu/agc/pubs/FCS3/FCS3580/FCS3580.pdf> and USDA Complete Guide to Home Canning: http://nchfp.uga.edu/publications/publications_usda.html may be helpful.
 863 Dill Pickles: (pint jar or smaller), canned using a boiling water canner: Use the recipe in the **4-H Fair Recipe Book** at <http://4-h.ca.uky.edu/content/food-and-nutrition>. The USDA recommended headspace for pickles: $\frac{1}{2}$ inch.

Canning label must be completed by member and affixed to the jar. Publications Home Canning Pickled and Fermented Foods (FCS3-582) at <http://www2.ca.uky.edu/agc/pubs/FCS3/FCS3582/FCS3582.pdf> and USDA Complete Guide to Home Canning: http://nchfp.uga.edu/publications/publications_usda.html may be helpful

- 864 Strawberry Jam: (half pint or smaller jar), canned using a boiling water canner. Use the recipe in the **4-H Fair Recipe Book** at <http://4-h.ca.uky.edu/content/food-and-nutrition>. The USDA recommended headspace for jam is ¼ inch. Canning label must be completed by member and affixed to the jar. Write the type of fruit used on the canning label. Publications FCS3-579 at <http://www2.ca.uky.edu/agc/pubs/FCS3/FCS3579/FCS3579.pdf> and USDA Complete Guide to Home Canning: http://nchfp.uga.edu/publications/publications_usda.html may be helpful. Refrigerator and freezer jams are not appropriate for this class.
- 865 Green Beans: (One pint), canned using a pressure canner. Use the recipe in the **4-H Fair Recipe Book** at <http://4-h.ca.uky.edu/content/food-and-nutrition>. Beans may be 'raw packed' or 'hot packed' but the packing method used must be indicated on the label. The USDA recommended headspace for green beans is 1 inch. Canning label must be completed by member and affixed to the jar. Publication FCS3-583 Home Canning Vegetables (<http://www2.ca.uky.edu/agc/pubs/FCS3/FCS3583/FCS3583.pdf>) and USDA Complete Guide to Home Canning: http://nchfp.uga.edu/publications/publications_usda.html may be helpful.

4-H HOME ENVIRONMENT - DIVISION 6039

Wall hangings and bulletin boards must be ready to hang with appropriate hardware attached.

UNIT I

- 887 Color Collage - (p.10, activity 3.) A collage of color created by the member to depict colors liked by the member. A collage is made up of a collection of objects (such as paper, fabric, wrapping paper, wallpaper, carpet, or other materials) artistically arranged and adhered to a mat board or foam core board. {888 Texture Collage - (pp. 8-9, see activities 1 & 2). A collection of textured items or rubbings of textured items artistically arranged and adhered to mat board or foam core board
- 888 Texture Collage (p.10, activities 1 & 2). A collection of textured items or rubbings of textured items artistically arranged and adhered to mat board or foam core board.
- 889 Transparent finish applied to small wood object. Apply a clear finish such as tung oil or penetrating seal or polyurethane which does not include stain to a small wood object such as a bowl, tray, game board, or box. A transparent finish allows the wood grain to show through. Judging emphasis will be on how well the object is prepared for the finish and how well the finish has been applied, not the construction of the wood object. The wood object may be made by the member, made by someone else, purchased or found. Items that are stained or finished with paint do not fit in this class.
- 890 Simple, cloth item for the home (Sewing machine may be used but is not required). Examples include decorative pillow tablecloth, laundry bag, place mats, footstool with a seat made of woven fabric; fabric applied to an item such as a box, plate, or lampshade. Unacceptable: purses, tote bags, backpacks, duffle bags.
- 891 Wastebasket – decorated by member
- 892 Crate Bookshelf – designed and created by member
- 893 Bulletin board (If it is to be hung on a wall, it must be ready to hang with appropriate hardware attached.)

UNIT II

- 894 **Decorative item for the home and photo**—decorative item created by the member as part of a 4-H Home Environment Project. Include a photo showing how the item fits into the home's décor.
- 895 Simple wood item **refinished** by the 4-H member (pp. 14-15) - Item should have straight lines with no elaborate carvings or turnings. (The idea is to learn how to apply a new finish such as paint, stain, varnish, polyurethane, etc. to a simple wooden furnishing that's already in use.) Documentation is to include a "before" photo with explanation of how the item was refinished must be securely attached. Examples: refinished a-footstool, children's furniture, small box, tray, picture frame, bookshelves, and plant stand.
- 896 Cloth item for the home created using a sewing machine (Unit II, p. 12-14). Examples: hemmed table cloth or table runner, wall hanging, pillow, pillow case, throw, embellished towels, shower curtain, chair cover, laundry bag, pet bed, valence, and curtains. Unacceptable: purses, tote bags, backpacks, duffle bags.
- 897 Invitation and thank you letter/note—Design an invitation and thank you letter/note for a sleepover, birthday party or other occasion of your choice. (p. 6-7) Cards/letters may be created with computer software or handwritten. Decorations on the cards/letters may be member's original artwork, computer-generated art, purchased or found decorative items. The message written in the card or letter is more important than the decorations. Write your name and county on the back of each card/letter and place each card/letter in a plastic sheet protector. Envelopes not required.

UNIT III

*All exhibits must include documentation specified below.

- 898 Accessory for the home created by the 4-H member - This exhibit is to be made up of two parts: 1) the accessory and 2) a sheet or folder of documentation. Documentation is to include: a sketch or photo to show how the accessory is used in the home and a description of how the design and colors fit in with the other furnishings and color used in the home. Examples: stitchery or appliqué wall hanging, latch hook items, pillow with applied design (stitchery, appliqué or other media), rug, picture in appropriate frame and ready to hang.
- 899 **Individual place (table) setting** - This exhibit is to be made up of two parts: 1) one individual place setting appropriate to a theme or event chosen by the 4-H member and 2) a color photo or diagram of the place setting showing how it should be arranged. Include plate, beverage container(s), placemat, and napkin. Additional decorative item(s) are optional. All items that make up the place setting are to fit on the surface of the placemat. Flatware (knife, fork and spoon) **must** be included in the photo/diagram showing how all the items are arranged, but do NOT send flatware to the state fair. To insure that all pieces get returned to the member, write the name and county of the exhibitor on tape and place it on every part of the table setting in a location hidden to the public when exhibited at the fair.
- 900 Piece of furniture refinished (stripped, sanded, and painted or stained/sealed) by the 4-H member. This exhibit is to be made up of two parts: 1) the furniture and 2) Documentation is to include a "before" photo with explanation of how the item was refinished must be securely attached. Examples: rocker, table, chair or chest.
- 901 Old or discarded item made useful in a new way as a home accessory. This exhibit is to be made up of two parts: 1) the accessory and 2) a sheet or folder of documentation. Documentation is to include a "before" photo; an explanation of how the item was made useful again in a new way; materials used, cost and time involved in project. Examples: old silverware flattened and made into wind chimes; scrap wood pieces made into wall art; old lace doily attached to a pillow or framed; old tool box cleaned up and made into a TV stand.

UNIT IV

*All exhibits must include both article and documentation specified below.

- 902 An accessory for the home, made with member's original or adapted design – This exhibit is to be made up of two parts: 1) the accessory and 2) a sheet or folder of documentation. Documentation is to include an explanation of how the item was created/adapted and a description of how and where item is used in the home. Examples: latch hooked rug or wall hanging; pillow with stitchery design; wall hanging of natural dyed yarns, or drawing with mat and finished or refinished frame.
- 903 Heritage item refinished, restored, or made by the 4-H member - This exhibit is to be made up of two parts: 1) the item and 2) a sheet or folder of documentation. Documentation is to include information on the history or meaning of the item to the member, how the item was refinished, restored, or made by the member, and how it is used in the home. Examples include antique or collectible furniture, memory box, scrapbook that reflects family history/home/house/farm/land of several generations), quilt with heritage design, wall hanging showing family tree.
- 904 Purchased article selected by 4-H member to solve a home decorating problem – This exhibit is to be made up of two parts: 1) the purchased article and 2) a folder of documentation. Documentation is to include a description of the problem to be solved, alternatives considered in the solution of the problem, how the plan was carried out, resources used (time, money) and member's evaluation of the results (satisfaction with purchased article, how article is used in the home), and photos illustrating the before and after effect. Examples include wall decoration, lamp, vase, storage item, desk accessories, bedspread, rug, table linens, pillow, and draperies.
- 905 A cloth article made by the 4-H'er showing a major home improvement – This exhibit is to be made up of two parts: 1) the cloth article and 2) a folder of documentation. Documentation is to include a written description, "before" and "after" pictures /showing how cloth article is used in home, other colors used in room, time and costs involved, and care required. Examples: bedspread, quilt, window treatment and boxed bench pad. **Unacceptable: purses, tote bags, backpacks, duffle bags.**

ADVANCED EXHIBIT

* All exhibitors must include documentation specified below.

- 906 Furniture Experience—Furniture which has been refinished, reupholstered, recovered, recycled, reused or remodeled - Exhibit is to be made up of two pieces: 1) the piece of furniture and 2) a folder describing the original condition of the furniture (include a picture if possible), work required in completing project, time and cost involved, and how item is used in the home. **DO NOT INCLUDE NEWLY CONSTRUCTED FURNITURE.**
- 907 Design Experience - Create a plan for or actually complete a design experience. The exhibit is to be made up of two pieces: 1) a home furnishing item which is representative of the design experience (item may be made by the member or purchased) and 2) a folder or notebook describing the plan. Examples of project ideas: a plan for redecorating a room; creation of an accessory item using an original design of 4-H member; notebook with

pictures and descriptions of architectural styles used in Kentucky homes.

- 908 Heritage Experience - Complete a heritage project. The exhibit is to be made up of two pieces: 1) an item representative of the heritage experience and 2) a folder or notebook describing the overall experience, the significance of the project to your family. Examples of project ideas: Restoration of a family heirloom (could include caning, reseating, etc.) including who it belonged to and the significance to the family; study of furniture styles including pictures and history; study of old buildings in the community including photos and descriptions of the architectural significance, period of history, uses of the buildings; create an item after learning a heritage or craft skill...especially from an older family member or friend and describe how skill was learned, how interest was stimulated and how you will use item and skill.
- 909 Major Home Improvement Experience - Complete a major home improvement project. The exhibit is to be made up of a notebook which describes the project, tell whether project was an individual project or a group or family project, describe the do-it-yourself skills learned time and cost involved. Include before, during, and after photographs, if possible. Examples: improve storage areas in the house or garage; paint the house; wallpaper and decorate a room; remodel the basement.

CHANGING SPACES:

- 910 Color Wheel Collage
This exhibit will incorporate the color wheel in some way. A collage is made up of a collection of objects (such as paper, fabric, wrapping paper, wallpaper, carpet, or other materials) artistically arranged and adhered to a mat board or foam core board.
- 911 Design Style Board
There are many styles of design that youth can be drawn to, some examples include but are not limited to: American Traditional, Shabby Chic, Industrial, Southwestern, and Arts and Crafts. Youth will identify one of the styles they are particularly drawn to and create a style board that represents that style. This can include fabrics, magazines and online photos, furniture, lighting, and room photos. As well as other representative artifacts that represent the style. Minimum size 8 ½ x 11 inches. Maximum size 11 x 17 inches on mat or foam board. Make sure the name of the style youth are trying to portray is visible on the display.
- 912 Bubble Diagram for home
Bubble diagrams are sketches that help identify and prioritize areas in and around the home that should be included in the plan and how traffic and light flows from one space into other. These diagrams are used at the preliminary phase of the design process. This exhibit will include two parts: 1) a mounted color bubble diagram for a home and surrounding space. Each bubble should be labeled according to the spaces intended use. Include arrows or lines to signify the flow of traffic between spaces. 2) a folder of the following documentation. 1. What are the central bubbles in your diagram and why? 2. What style of home best aligns with your bubble diagram, and 3. A legend with color coding, explanation of arrows or lines and other items that show up on your bubble diagram.
- 913 Bubble diagram for Commercial
Bubble diagrams are sketches that help identify and prioritize areas in and around the space that should be included in the plan and how traffic and light flows from one space into other. These diagrams are used at the preliminary phase of the design process. The needs of commercial spaces are very different the residential. This exhibit will include two parts: 1) a mounted color bubble diagram for a commercial space and surrounding area selected by the youth. Each bubble should be labeled according to the spaces intended use. Include arrows or lines to signify the flow of traffic between spaces. 2) a folder of the following documentation. 1. What type of commercial space did you choose? 2. What are the central bubbles in your diagram and why? 3. A legend with color coding, explanation of arrows or lines and other items that show up on your bubble diagram.
- 914 Storage analysis
An important part of any home that is often overlooked is storage. Storage should account for 10-15% of the total area of the home. For this exhibit you will create or select a floorplan and highlight the storage spaces. You will then calculate what percentage of sq. feet in the home is dedicated to storage. Your exhibit should include the mounted floorplan with highlighted storage areas, the total Sq. Feet of the home, the Sq. Feet of the storage areas, and the percentage of Sq. Feet that is dedicated to storage.
- 915 Bedroom Room Floor Plan
This exhibit is to be made up of two parts: 1) a mounted room plan and 2) folder of the documentation described below. Use (scale: 1 square = 1 foot). Include a door(s), window(s), and furniture. Minimum size 8 ½ x 11 inches. Maximum size 11 x 17 inches on matt or foam board. should include answers to these questions: 1.What are its dimensions? 2. How many square feet are in the room? 3. Tell about how you worked with the items in your room such as walls, windows, doors and furniture.

- 916 **House Floor Plan**
This exhibit is to be made up of two parts: 1) mounted house plan and 2) folder of the documentation described below. Include bedroom(s), bath(s), living space, kitchen, door(s) and window(s). Including a garage is optional. Minimum size 8 ½ x 11 inches. Maximum size 11 x 17 inches on mat or foam board. Documentation should include answers to these questions: 1. Did you look at other floor plans for inspiration? 2. What type of roof does your house have? 3. Did you consider how a family member who is disabled (for instance, a wheelchair user) might get around in your home?
- 917 **Commercial Floor Plan**
This exhibit is to be made up of two parts: 1) mounted floor plan for a commercial space of the young person choice and 2) folder of the documentation described below. Include all of the spaces that would be needed in the industry answers for this project. Minimum size 8 ½ x 11 inches. Maximum size 11 x 17 inches on mat or foam board. Documentation should include answers to these questions: 1. Did you look at other floor plans for inspiration? 2. Did you consider how folks who are disabled (for instance, a wheelchair user) might get around this space?
- 918 **Presentation Board – Color Scheme for One Room**
This exhibit is to be made up of two parts: 1) a presentation board as described below and 2) a folder of the documentation described below. Create a presentation board which illustrates a color scheme for any room in the home. On mat board or foam board, mount color pictures or actual swatches of fabric, wall covering, paint, and flooring. (Color pictures may be downloaded and printed or cut from magazines to represent these items. The mounting board should be 15" or 16" X 20" inches. In the folder, describe the person who lives in the room and the decisions required in selecting the color scheme
- 919 **Presentation Board- Floor plan & Color Scheme for Bedroom**
This exhibit is to be made up of two parts: 1) a presentation board as described below and 2) a folder of the documentation described below. Create a presentation board which includes a floor plan (with placement of furniture) and color scheme for a bedroom. (scale: 1 square = 1 foot). Include a door(s), window(s), and furniture. On mat or foam board, mount the floor plan and color pictures or actual swatches of fabric, wall covering, paint, and flooring. (Color pictures may be downloaded and printed or cut from magazines to represent these items.) The mounting board should be 15" or 16" X 20." In the folder, describe the decisions required in selecting the color scheme, flooring, wall, and window treatments; describe the furniture and how the furniture was arranged to accommodate traffic flow; describe the floor, wall, and window treatments selected, etc.; and describe what you like most about the room.
- 920 **Presentation Board- Floor Plan & Color Scheme for Great Room or Family Room**
This exhibit is to be made up of two parts: 1) a presentation board as described below and 2) a folder of the documentation described below. Create a presentation board which includes a room floor plan (with placement of furniture) and color scheme for a great room/family room. (scale: 1 square = 1 foot). Include a door(s), window(s), and furniture. On mat or foam board, mount the floor plan and color pictures or actual swatches of fabric, wall covering, paint, and flooring. (Color pictures may be downloaded and printed or cut from magazines to represent these items.) The mounting board should be 15" or 16" X 20." In the folder, 1. A description of the decisions required in selecting the color scheme, flooring, wall, and window treatments; describe the furniture and how the furniture was arranged to accommodate traffic flow; describe the floor, wall, and window treatments selected, etc.; and describe what you like most about the room.
- 921 **Universal Design**
Universal design is a design practice that creates spaces that usable by all people, to the greatest extent possible. This exhibit is to be made up of two parts: 1) a presentation board as described below and 2) a folder of the documentation described below. Create a presentation board that has two floorplans on it. One floorplan should be in its original form and the other should be changed to meet universal design practices. Highlight the areas that you have changed in the second floorplan. Include a door(s), window(s), and furniture. On mat or foam board, mount the floor plan. The mounting board should be 15" or 16" X 20." In the folder list the changes that you have made to the floorplan to make it accessible to all.

CONSUMER AND FINANCIAL EDUCATION - DIVISION 6040

The poster may be created on 20" wide X 30"high foam core board or sturdy cardboard (turned in a vertical direction). The use of pencil on the front of poster is discouraged. On back of poster attach a one-page, front side only, narrative explaining how the decision making process was used to reach your final choice. Include name, age, and county at top of narrative. The narrative can be handwritten or a computer printout; single or double spaced; on plain white or notebook paper, one to two pages, printed front side only. Place 2 copies of the narrative in 1 plastic sleeve. Attach the sleeve to

the back of the poster with tape. Some factors to consider would be: price, safety, end use, size, appearance, etc. You are encouraged to list your research sources (individual and/or written) at the end of your narrative.

Information for the following classes can be found in the 4-H Cooperative Curriculum Service (4HCCS) Consumer Savvy project manuals.

Level 1 (Grades 4-5): The Consumer in Me

- 914 Bargain Shopping – Complete a cost comparison chart for one product you and your family use as presented on pp. 20-21. Include a narrative of “Check This Out!” Make a poster on “comparison shopping
- 915 What is the Best Buy? - Complete a cost comparison chart for two products in three different sizes as presented on pp. 22-23. Include a narrative of “Check This Out!” Make a poster on “checking prices.”

Level 2 (Grades 6-8): Consumer Wise

- 916 Media and the Marketplace – Complete a commercial comparison through information presented on pp. 18-19. Include a narrative of “Check This Out!” Make a poster related to “advertising aimed at young people.”
- 917 Decision! Decisions! Decide! Complete a decision making poster on any item you wish to purchase as presented on pp. 12-13. Include a narrative of “Check This Out!” Make a poster related to “the consumer decision-making process.”

Level 3 (Grades 9-12): Consumer Roadmap

- 918 How to Write a Wrong - Write a complaint letter as outlined on pp 22-23. Include a narrative of “Check This Out!” Make a poster related to “resolving a consumer complaint.”
- 919 I Own a Car or Does It Own Me? - Calculate and illustrate the costs of owning a car as presented on pp. 29-30. Include a narrative of “Check This Out!” Make a poster related to “consumer decision-making in buying a car.”
- 920 What Does Real Life Cost? - Identify and illustrate the true costs of living on your own as presented on pp. 32-33. Include a narrative of “Check This Out!” Make a poster related to “the financial responsibilities of living on your own.”

4-H LEADERSHIP - DIVISION 6041

1. Exhibits must correspond to
 - a. A project or activity from the Leadership or Workforce Preparation Curriculum
 - b. Only pages relevant to project are needed.
 - c. All pages should be identified with name, county, lot and class. Pages should be in plastic sheet protectors.
2. An exhibitor is limited to one set of record pages in each division.
3. Leadership scrapbook must be 12"x12" or 8 ½" x 11" scrapbook or notebook format. Resume must be in sheet protector on 8 ½"x11" paper.
4. Refer to the class entry to determine the required number of pages.
5. Photos should clearly address the theme or activity corresponding to the project. Each photo should be explained with a 2-3 sentence journaling caption. One or two paragraphs of narrative explaining the project or activity should be included on the Scrapbook pages. Additional pages beyond those required by the project will not be reviewed.
6. Photos can be taken by the 4-Her or another person. The pictures should clearly address the Leadership. Pictures may be cropped as desired.
7. The Leadership Project should contain the following:
 - a. 2 or more photos on each page;
 - b. Each photo should be explained with captions;
 - c. 1-2 paragraphs of narrative on one of the pages;
 - d. No additional pages of narrative are needed.
8. Pages will be scored on: organization of project (easy to follow), neatness, narrative content, caption content, photo content, and overall effectiveness.

Unique Rules or Instructions:

- a. Create poster on 20" wide x 30" high foam core board or sturdy cardboard (turned in a vertical direction).
- b. The use of pencil on the front of the poster is discouraged.
- c. Judging criteria will be based on theme, poster design (lettering, attractiveness, how well it conveys a message), and narrative.
- d. Information for the class can be found in Kentucky 4-H Civic Engagement and Service Curriculum. Posters that do not include the narrative or do not conform to the topics specified in the class description will not be judged.

Division 6041.1 – 4-H 21st Century Skills

- 925. Senior Division (Grades 9-12): Resume – one page resume using Microsoft Word. See the Kentucky 4-H

925 A. Junior Division (Grades 4-8):

In this project for grades 4-8, 4-Hers will interview someone in their community and create a poster showing the results of the interview. The person should work in a field the 4-Her is interested in pursuing. Topics to cover in the interview include: first name of interviewee, position title, responsibilities, experiences, education or training needed, why chosen, challenges, and successes in the position. A one-page narrative describing the process should be attached to the back of the poster.

Division 6041.2 4-H Civic Engagement/Service Learning

926 Junior Division Civic Engagement and Service

In this project for grades 4-8, 4-Hers will interview a Community Worker (Helper) and create a poster showing the results of the interview. Community workers are described as people who work in the community for its overall well-being. Examples of community workers/helpers are plumbers, carpenters, traffic police, doctors, teachers, and safety personnel. Community workers work for the people residing in the community. They solve problems that we experience in daily life.

Poster to include: First name of worker, title, responsibilities, education/training, challenges, and successes, and why they want to help their community. A one-page narrative describing the process should be attached to the back of the poster.

926 A Senior Division Civic Engagement and Service

In this project for grades 9-12, 4-Hers will create a poster showing the process of completing a service project from beginning to end. Service learning is a method through which 4-Hers learn and develop through active participation in thoughtfully organized service that

- is conducted in and meets the needs of a community;
- is coordinated with a community service program, and with the community; and
- helps foster civic responsibility.

Poster to include the project to be completed, why there is a need, what the most effective plan was, the service that was done, and the results of the service project. A one-page narrative describing the process should be attached to the back of the poster.

4-H LEADERSHIP PROJECT:

- 927 – Junior Level: 2 pages based on an activity, program or project from the 4-H Leadership Curriculum or program (ie. Club, activity, project, event)
- 928 – Senior Level: 4 pages based on an activity, program or project from the 4-H Leadership Curriculum or program (ie. Club, activity, project, event).

Division 6041C Secretary Scrapbook

- 929 4-H Club Scrapbook – Using pictures and captions tell about your 4-H Clubs year focusing on leadership, communications and community service activities.

Division 6042- Trends and Traditions

See General Rules applying to all 4-H exhibitors and general rules applying to 4-H exhibits listed previously in this catalog.

1. All items must have been made since the last State Fair.
2. All photography classes with one photograph must be mounted on 10"x 16" MAT BOARD- (no poster board or foam core board accepted). Single photographs are limited to up to a maximum size of 8"x 12".
3. Each picture must be mounted securely. Rubber cement or dry mounting tissue is recommended. Do not use photo mounting corners.
4. All entries must follow the specifications and rules listed in their class in order to be named champion.
5. Junior division includes ages 9-13; Senior division includes ages 14-18.

Clover Photography

1. Exhibit is limited to a single photograph.
2. Subject of photograph must include 4-leaf clover. (Photographs of 3-leaf clovers will NOT be accepted.)
3. 4-leaf clover may be real or created.
4. Photograph may be color or black and white.
5. Follow all mounting rules described in the Cloverville Photography division.

6. Maximum photograph size 8" X 12".
7. The 4-H identification tag should be located in the bottom right hand corner.

- 1010 Junior Clover Photograph
- 1011 Senior Clover Photograph

Upcycling Project

Taking something that you are throwing away and making it into something that maintains or improves the quality of the materials. Ex. There are coin purses made from sweaters, earrings cut out of vinyl records. Designs are judged on quality, use and creativity.

- 1050 Junior Upcycling Project
- 1051 Senior Upcycling Project

4-H Cake/Cupcake Decorating

1. Entry consists of a decorated (Styrofoam) cake.
2. Styrofoam MUST be the base for the decorating. Real cakes will NOT be accepted.
3. Judging is based on decoration only not taste.
4. Exhibit is not limited to a color or design.
5. Refrigeration will NOT be provided.
6. Exhibit must be limited in size to no taller than 24" and no more than ½ sheet board.
7. Cakes may be returned based on the condition at the end of the fair.
8. 4-H identification cards must be attached to bottom right hand corner of sheet board.

- 1060 Junior 4-H Cake Decorating (Cake must include the 4-H Clover either in design or decoration)
- 1061 Senior 4-H Cake Decorating (Cake must include the 4-H Clover either in design or decoration)
- 1062 Junior General Cake Decorating
- 1063 Senior General Cake Decorating
- 1070 Junior 4-H Cup Cake Decorating
- 1071 Senior 4-H Cup Cake Decorating
- 1072 Junior General 4-H Cup Cake Decorating
- 1073 Senior General 4-H Cup Cake Decorating

Non Traditional Needlework

The objective for this class is for youth to learn the basic stitches of knitting either non traditional needles, arms, or looms.

- 1074 Junior loom knitting
- 1075 Senior loom knitting
- 1076 Junior arm knitting
- 1077 Senior arm knitting

20

LARUE COUNTY FAIR

23

VOLUNTEER



Join the 4-H
GET INVOLVED
Challenge



OPEN TO LARUE COUNTY
YOUTH, AGES 9-18.

GRAND PRIZE: **\$100**

SPONSORED BY: HEATH FARMS

- ENTER A PROJECT
- SHOW AN ANIMAL
- VOLUNTEER

How?

CONTACT MISTY WILMOTH FOR DETAILS ON HOW TO
GET INVOLVED MWILMOTH@UKY.EDU OR 270-358-3401.



LARUE COUNTY FAIRGROUNDS
375 S GREENSBURG ST., HODGENVILLE



EAT YOUR
VEGGIES

4-H

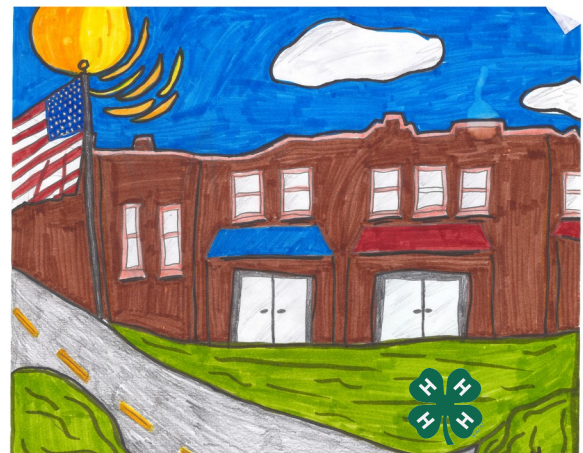
Fresh

50 Challenge

**JOIN
US!**

- OPEN TO LC YOUTH AGES 5-18
- CHALLENGE DEADLINE: 7/31/2023
- 270-358-3401 OR MARCY.WARD@UKY.EDU

REGISTER



Ally Harp, HES
2022 Fair Art Contest Entry

FUN!

KIDS

DAY AT THE GROUNDS

A COMMUNITY EVENT HOSTED BY THE LARUE COUNTY 4-H COUNCIL

July 29
1-3 PM

*** BARREL TRAIN RIDES**

*** PETTING ZOO**

*** PRIZES * FOOD**

*** INFLATABLES**

*** GAMES**

LARUE COUNTY FAIRGROUNDS
375 S. GREENSBURG ST., HODGENVILLE

Cooperative Extension Service
Agriculture and Natural Resources
Family and Consumer Sciences
4-H Youth Development
Community and Economic Development

Educational programs of Kentucky Cooperative Extension serve all people regardless of economic or social status and will not discriminate on the basis of race, color, ethnic origin, national origin, creed, religion, political belief, sex, sexual orientation, gender identity, gender expression, pregnancy, marital status, genetic information, age, veteran status, or physical or mental disability. University of Kentucky, Kentucky State University, U.S. Department of Agriculture, and Kentucky Counties, Cooperating.
LEXINGTON, KY 40546



Disabilities
accommodated
with prior notification.