



LaRue County 4-H
4-H Cloverbuds Record Form



4-H Cloverbud



My Name is

T-shirt size: _____ Date Submitted: _____

* Submit to the Extension Office by September 30 in order to be eligible for recognition at the annual 4-H Awards Reception

* Cloverbuds are ages 5 to 8 as of January 1 during the 4-H Program Year or in Kindergarten through 3rd grade.

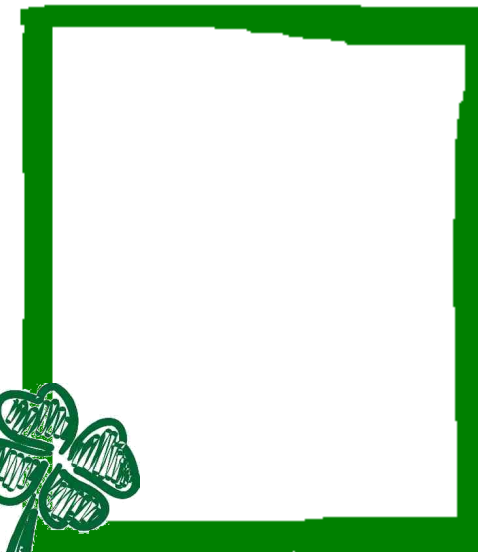
All About Me!

Birthdate _____

Age _____

Grade _____

Attach a picture of you or draw
a self portrait in the frame.



Check each club you participated
in from September 1, 2022 to
August 31, 2023.

- ☐ Cooking
- ☐ Livestock
- ☐ Horse
- ☐ Dog
- ☐ Art Classes
- ☐ Gardening



List other 4-H activities you
participated in from September 1, 2022
to August 31, 2023.

Did you participate in the Cloverbud Day Camp?

Yes
☐

No
☐

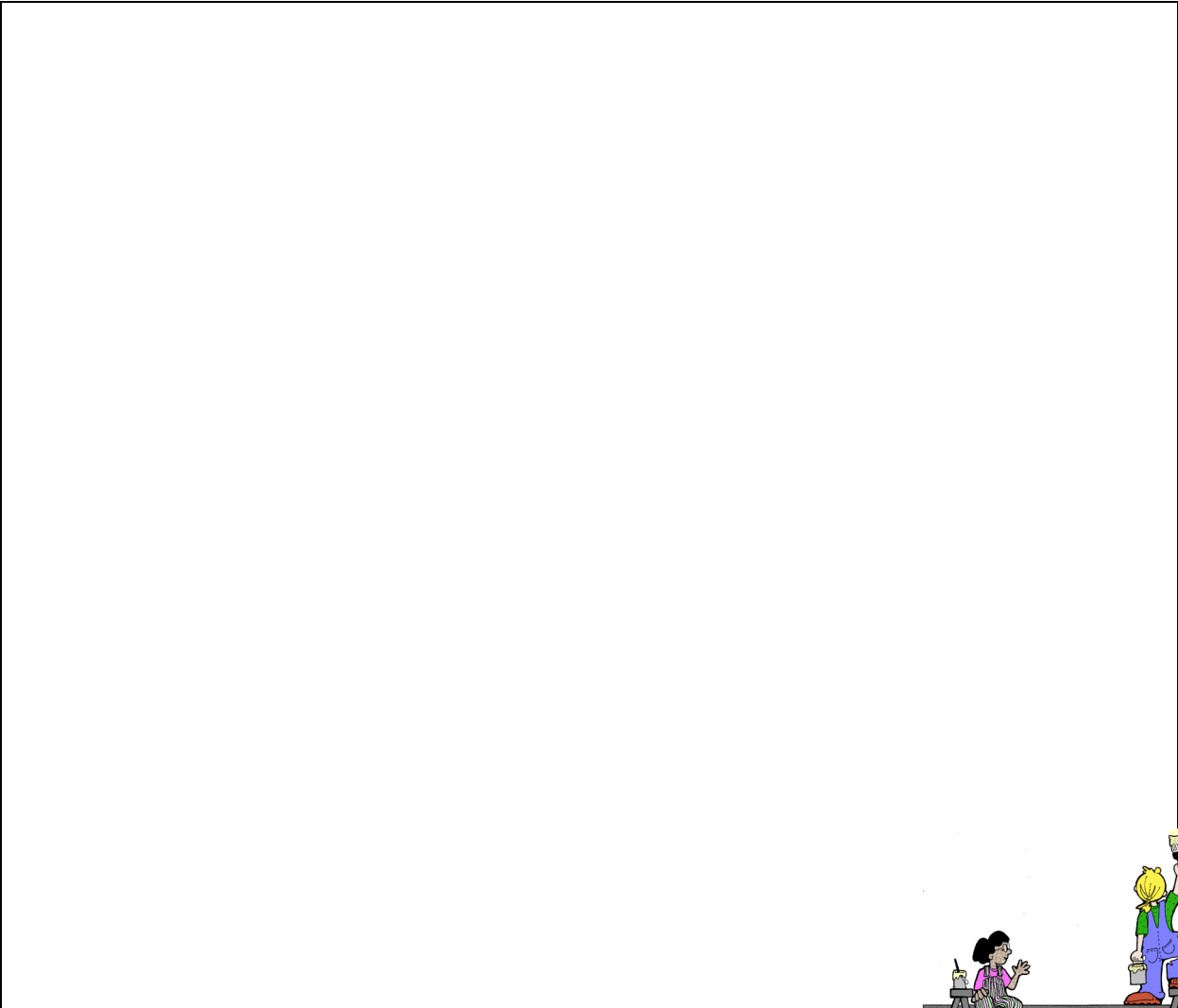
Did you participate in the Cloverbud overnight Camp?

Yes
☐

No
☐



Draw a picture of the favorite 4-H activity, project or event you participated in over the past 4-H program year.



Describe the picture and why you chose this project or activity. What did you like about it?



Draw and color a picture in each leaf to show what the four "H"s in 4-H stand for. Write the words on the blanks provided for each one.

